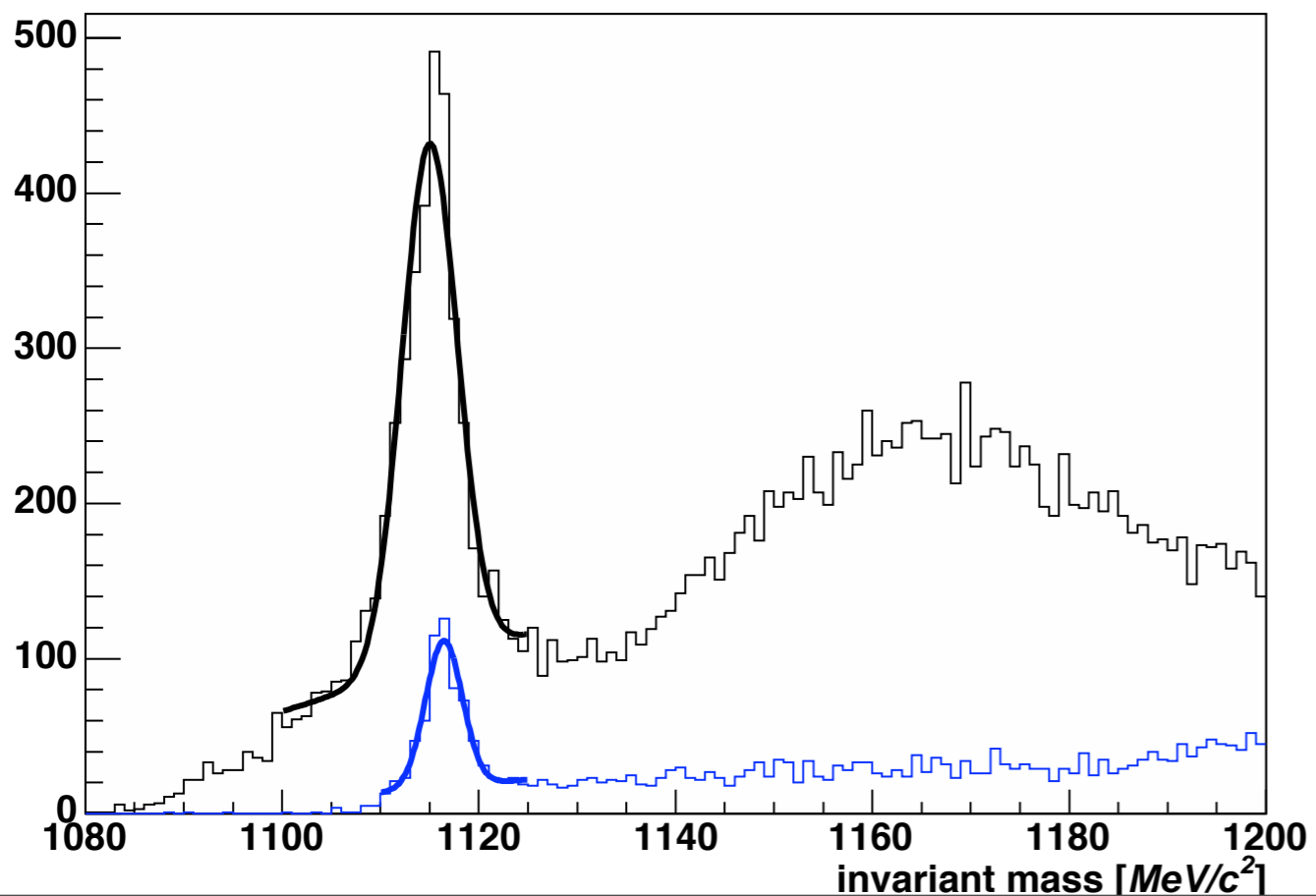


Λ reconstructed with v.600 w/o short flag
(for FINU 06[0-1][0-9][0-9])

FWHM : 13 ± 1 MeV
(cf. 6MeV @ PRL)

reconstruction of more runs
in progress...



Previous data (as of 23rd/Feb/2004)
before fine alignment

taken from:
<http://nexus.kek.jp/~fujioka/knucl/finuda0223.pdf>